



**MILWAUKEE
SCHOOL OF
ENGINEERING
Bulletin**

This is *MSOE* issue

COURSES IN ELECTRICAL TECHNOLOGY at MSOE

lead to:

Technical Service Certificates

Engineering Technician Certificates

Associate in Applied Science Degrees

Bachelor of Science Degrees in Electrical Engineering

Radio and Television Courses

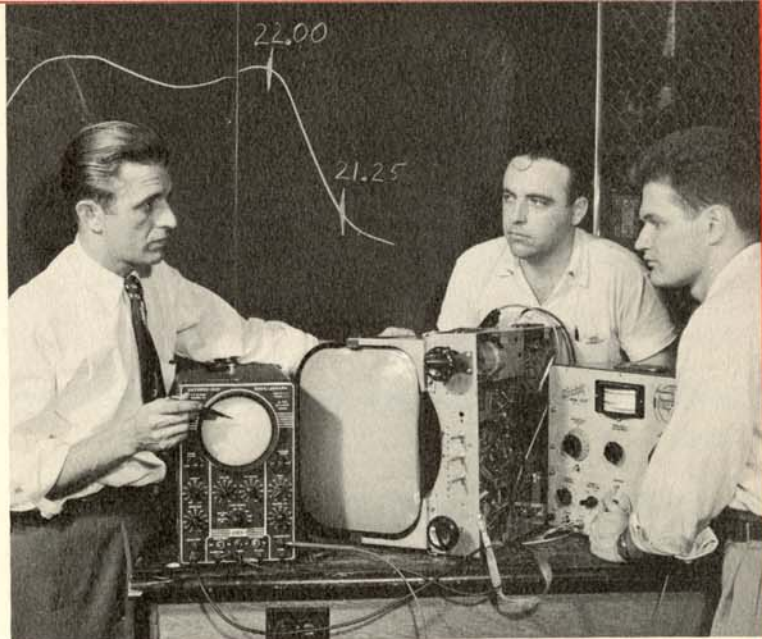
Radio and Television Service	12 months
Radio Technician	12 months
Radio and Television Technician	18 months
Electrical Engineering, electronics major,	
Bachelor of Science degree	42 months

Industrial Electronics Courses

Electronic Technician	12 months
Electrical Engineering, electronics major,	
Bachelor of Science degree	36 months

Electrical Power Courses

Electrical Service	6 months
Electro Technician	12 months
Electrical Engineering, power major,	
Bachelor of Science degree	36 months



RADIO AND TELEVISION COURSES

prepare graduates for many occupations of which a few are listed here: **Technical Service** — Radio and television serviceman, manufacturing assemblyman, sales and installation representative, appliance shop owner; **Engineering Technician** — Research and development technician, interference investigator, production tester, audio operator, television technician, radar and high frequency technician, manufacturing production supervisor; **Engineering** — Design engineer, research engineer, radio and television engineer, sound engineer, audio engineer, applications engineer, field engineer, sales engineer, production engineer.

OUR EXTRA-CURRICULARS . . .

Students are encouraged to participate in some part of the varied program of extra-curricular activities at the School but are advised not to allow such activities to hinder their academic development. In addition to their social events, most student groups sponsor technical lectures and discussions which are extremely beneficial to undergraduates in their professional growth.

The Student Affairs Division is the advisory center for all MSOE undergraduate organizations. This office helps student groups plan and coordinate their social programs and business affairs. The Division also assists student committees with arrangements for such all-School functions as the annual Homecoming and St. Patrick's Day observances, freshman mixers, and other events.

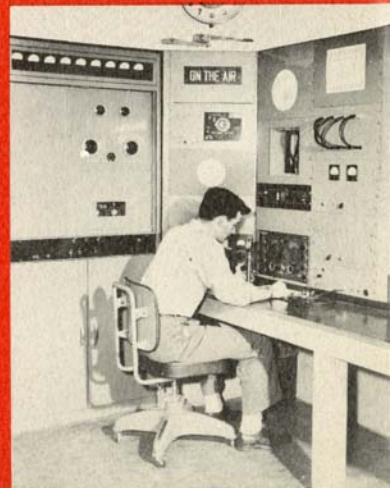
Self-governed by their own officers and committees, with the aid of individual faculty advisors, the following are MSOE student organizations: **Delta Alpha Epsilon** — fraternity for refrigeration, heating, air conditioning, and mechanical engineering students; **Delta Phi Zeta** — fraternity for electrical and mechanical engineering students; **Kappa Gamma Phi** — fraternity for electronics students; **Phalanx** — fraternity for the general student body; **Sigma Pi Rho** — fraternity for engineering students majoring in electrical power; **Tau Iota Epsilon** — fraternity for technician students; **Tau Omega Mu** — honorary fraternity for scholastic achievement whose members act as student tutors; **Photography Club** — open to all students, this club has dark room facilities; **Radio Club** — open to all students, this group operates amateur transmitter W9HHX; **Student Congress** — elected by student body to organize all-student affairs such as intramural basketball, bowling and softball, and govern other student affairs.

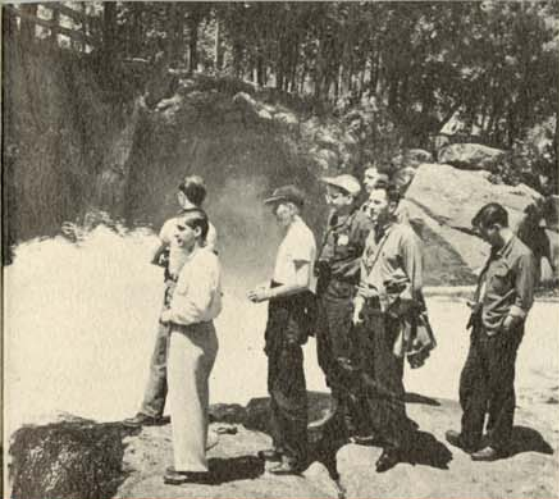
A student branch of the American Institute of Electrical Engineers has been operating at the School since 1919. Its objective is to promote the welfare of engineering students, professionally and socially.



Fraternity initiations

Amateur transmitter W9HHX





Photography Club field trips



Homecoming queen and her court



St. Pat, legendary patron of engineers,
reigns each March with his court



Radio Club code classes



Annual fall Homecoming dance



AIEE Student Branch tours local radio-TV station

M

S

Milwaukee, Wis.



E

